

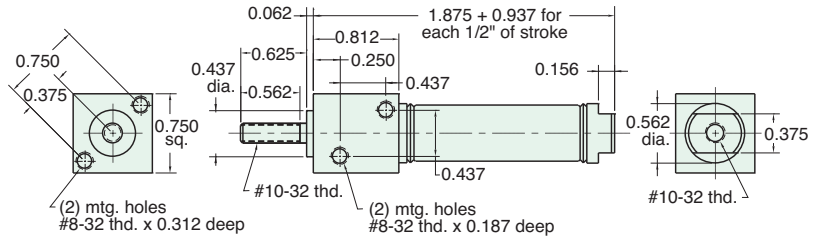
1/2" BORE STAINLESS STEEL CYLINDER



FSR-08-□-□

Single Acting

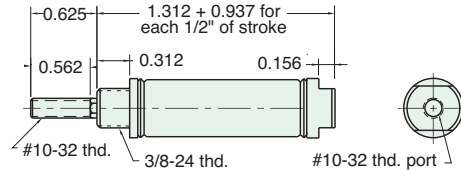
Mount: Front **Standard Stroke Lengths:** 1/2", 1", 1-1/2", 2", 3", 4"
Type: Rotating Rod **Spring Compressed:** 2 lbs. **Spring At Rest:** 0.9 lbs.
Options: M, B, H, V, S, N, W **Maximum Stroke:** 23"
 For B option add 0.375
 For M option add 0.312
 For S option add 0.187



SSN-08-□-□

Single Acting

Mount: Stud **Standard Stroke Lengths:** 1/2", 1", 1-1/2", 2", 3", 4"
Type: Non-Rotating Rod **Spring Compressed:** 2 lbs. **Spring At Rest:** 0.9 lbs.
Options: M, B, H, V, S, N **Maximum Stroke:** 23"
 For B option add 0.500
 For M option add 0.312
 For S option add 0.187

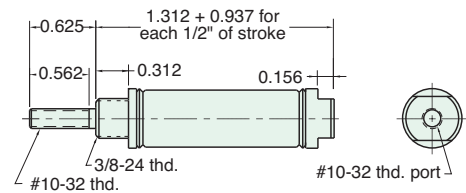


Nuts included, but not shown on drawing

SSR-08-□-□

Single Acting

Mount: Stud **Standard Stroke Lengths:** 1/2", 1", 1-1/2", 2", 3", 4"
Type: Rotating Rod **Spring Compressed:** 2 lbs. **Spring At Rest:** 0.9 lbs.
Options: M, B, H, V, S, N, W **Maximum Stroke:** 23"
 For B option add 0.500
 For M option add 0.312
 For S option add 0.187

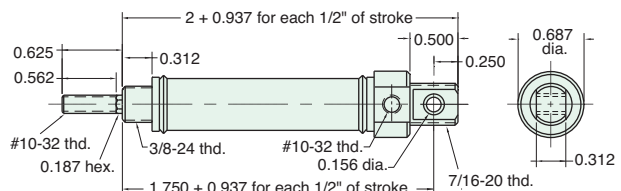


Nuts included, but not shown on drawing

USN-08-□-□

Single Acting

Mount: Universal **Standard Stroke Lengths:** 1/2", 1", 1-1/2", 2", 3", 4"
Type: Non-Rotating Rod **Spring Compressed:** 2 lbs. **Spring At Rest:** 0.9 lbs.
Options: M, B, H, V, P6, N **Maximum Stroke:** 23"
 For B option add 0.500
 For M option add 0.312



Furnished without nut(s). See Chart on Page 14.